

azad

views

An Exclusive Apartments Community,
Where Reality Surpasses Expectations



WELCOME TO

azad

views

Building on our success in AZAD. TAMEER is introducing to the market an extension from this success story "AZAD VIEWS".

AZAD VIEWS is revolving around maximizing views from your own home. The view could be on a beautiful landscape, water feature or a unique architecture design.

We have designed AZAD VIEWS with the concept of high quality lifestyle along the concept of the coziness in a neighborhood. AZAD VIEWS is a car free destination, where a person can walk through the promenade developed connecting AZAD 1 and AZAD VIEWS.

Who We Are

Throughout our 67 years of operations at TAMEER, we have delivered some of the most celebrated and renowned architectural landmarks in Egypt, such as Oberio, Helnan, Meridian, etc

Such current communities include AZAD and DIAR II, residential neighborhoods in the 5th Settlement and 6th of October, with over 27,500 diversified units combined and an array of amenities including a community center and pool.



Cairo International
Airport

POINT90
Point 90

AUC
The American
University in Cairo

Spot

URBAN
WALK
Urban
Walk

azad
vi.liv.

THE WESTIN
CAIRO
GOLF RESORT & SPA
The Westin Cairo
Golf Resort & Spa

10 min
from Downtown Katameya

15 min
from Cairo International Airport

40 min
from New Administrative Capital

Across the street from
AUC and Urban Walk

New Administrative
Capital



A new address with established appeal.

AZAD VIEWS offers both comfort and connectivity. Newcomers are welcomed into the already-thriving AZAD community and will be integrated into AZAD's physical spaces and community activities.

The two neighborhoods will be connected with a car free pedestrian promenade that can also serve as a common green area for picnics, barbecues, and residential gatherings, and down the line, for markets and bazaars. The promenade will be versatile and encourage community use, serving as a possible venue for sports activities, winter carnivals, outdoor yoga and dance studios, and anything else our community members can dream up. AZAD VIEWS residents will also have access to a promising mixed used project located across the street.





Facilities



Handicapped Accessibility



Cycling Track



Kids Area



Outdoors Sports



Jogging Track



Shaded Seating



Dog Park



Leisure and Exercising
Swimming Pool

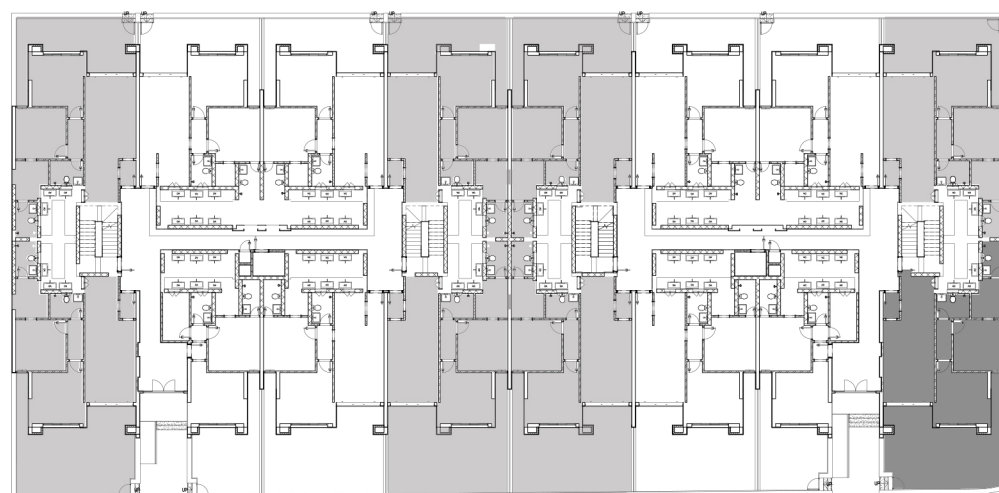
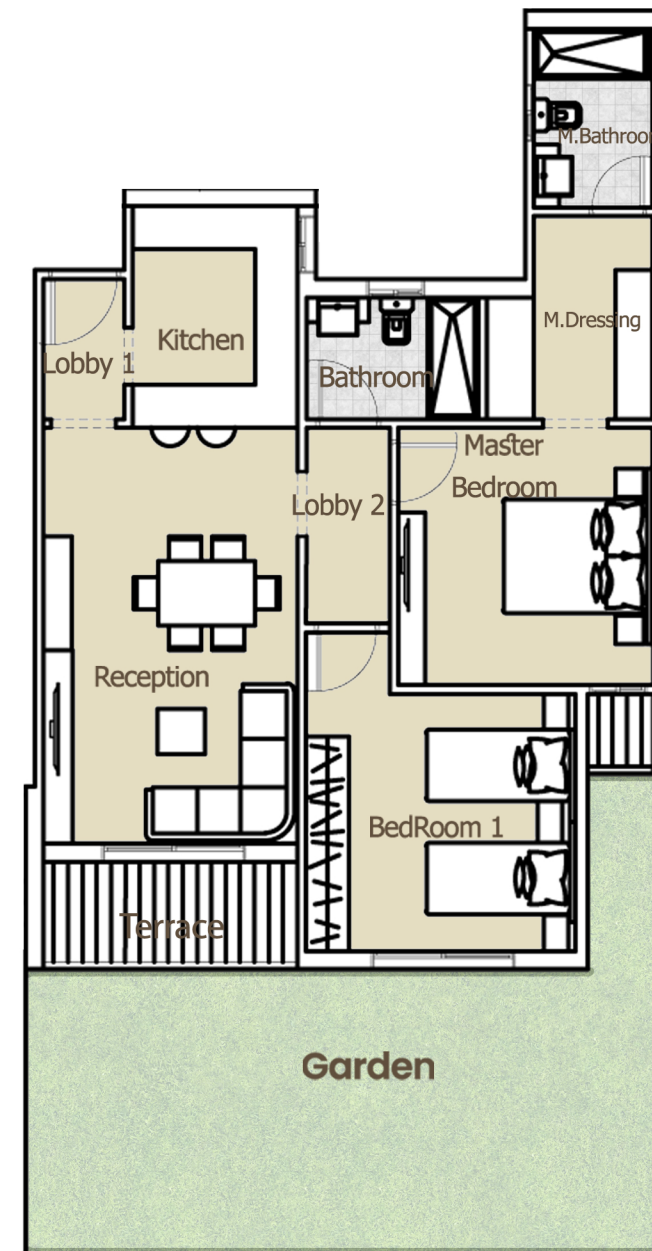


T68-U69

Total Gross Area 108.00 M2

Location Dimensions

Lobby 1	1.14 X 2.01
Kitchen	3.00 X 2.35
Reception	5.80 X 3.60
Lobby 2	2.90 X 1.15
Bathroom	2.35 X 1.80
Master Bedroom	3.60 X 3.55
M.Dressing	2.30 X 2.85
M.Bathroom	2.52 X 1.52
Bedroom 1	3.60 X 3.60



U69

T68

Unit Price **13,976,925**

10Y equal instalment 10%DP (Base)				7Y equal instalment 10%DP				Cash					
Dec. in price		0.00%		Dec. in price		-10.00%		Dec. in price		-30.00%			
	%	Installment value			%	Installment value			%	Installment value			
D.P.	10.00%	1,397,693	10%	D.P.	10.00%	1,257,923	10%	D.P.	100.00%	9,783,848	100%		
year 1	1	2.05%	286,706	12%	1	2.96%	372,718	13%	1	0.00%	-	100%	
	2	2.05%	286,706	14%	2	2.96%	372,718	16%	2	0.00%	-	100%	
	3	2.05%	286,706	16%	3	2.96%	372,718	19%	3	0.00%	-	100%	
	4	2.05%	286,706	18%	4	2.96%	372,718	22%	4	0.00%	-	100%	
year 2	5	2.05%	286,706	20%	5	2.96%	372,718	25%	5	0.00%	-	100%	
	6	2.05%	286,706	22%	6	2.96%	372,718	28%	6	0.00%	-	100%	
	7	2.05%	286,706	24%	7	2.96%	372,718	31%	7	0.00%	-	100%	
	8	10.00%	1,397,693	34%	8	10.00%	1,257,923	41%	8	0.00%	-	100%	
year 3	9	2.05%	286,706	36%	9	2.96%	372,718	44%	9	0.00%	-	100%	
	10	2.05%	286,706	38%	10	2.96%	372,718	47%	10	0.00%	-	100%	
	11	2.05%	286,706	41%	11	2.96%	372,718	50%	11	0.00%	-	100%	
	12	2.05%	286,706	43%	12	2.96%	372,718	53%	12	0.00%	-	100%	
year 4	13	2.05%	286,706	45%	13	2.96%	372,718	56%	13	0.00%	-	100%	
	14	2.05%	286,706	47%	14	2.96%	372,718	59%	14	0.00%	-	100%	
	15	2.05%	286,706	49%	15	2.96%	372,718	61%	15	0.00%	-	100%	
	16	2.05%	286,706	51%	16	2.96%	372,718	64%	16	0.00%	-	100%	
year 5	17	2.05%	286,706	53%	17	2.96%	372,718	67%	17	0.00%	-	100%	
	18	2.05%	286,706	55%	18	2.96%	372,718	70%	18	0.00%	-	100%	
	19	2.05%	286,706	57%	19	2.96%	372,718	73%	19	0.00%	-	100%	
	20	2.05%	286,706	59%	20	2.96%	372,718	76%	20	0.00%	-	100%	
year 6	21	2.05%	286,706	61%	21	2.96%	372,718	79%	21	0.00%	-	100%	
	22	2.05%	286,706	63%	22	2.96%	372,718	82%	22	0.00%	-	100%	
	23	2.05%	286,706	65%	23	2.96%	372,718	85%	23	0.00%	-	100%	
	24	2.05%	286,706	67%	24	2.96%	372,718	88%	24	0.00%	-	100%	
year 7	25	2.05%	286,706	69%	25	2.96%	372,718	91%	25	0.00%	-	100%	
	26	2.05%	286,706	71%	26	2.96%	372,718	94%	26	0.00%	-	100%	
	27	2.05%	286,706	73%	27	2.96%	372,718	97%	27	0.00%	-	100%	
	28	2.05%	286,706	75%	28	2.96%	372,718	100%	28	0.00%	-	100%	
year 8	29	2.05%	286,706	77%	29	0.00%	-	100%	29	0.00%	-	100%	
	30	2.05%	286,706	79%	30	0.00%	-	100%	30	0.00%	-	100%	
	31	2.05%	286,706	82%	31	0.00%	-	100%	31	0.00%	-	100%	
	32	2.05%	286,706	84%	32	0.00%	-	100%	32	0.00%	-	100%	
year 9	33	2.05%	286,706	86%	33	0.00%	-	100%	33	0.00%	-	100%	
	34	2.05%	286,706	88%	34	0.00%	-	100%	34	0.00%	-	100%	
	35	2.05%	286,706	90%	35	0.00%	-	100%	35	0.00%	-	100%	
	36	2.05%	286,706	92%	36	0.00%	-	100%	36	0.00%	-	100%	
year 10	37	2.05%	286,706	94%	37	0.00%	-	100%	37	0.00%	-	100%	
	38	2.05%	286,706	96%	38	0.00%	-	100%	38	0.00%	-	100%	
	39	2.05%	286,706	98%	39	0.00%	-	100%	39	0.00%	-	100%	
	40	2.05%	286,706	100%	40	0.00%	-	100%	40	0.00%	-	100%	
total		100%	13,976,925		total		100%	12,579,233		total		100%	9,783,848



